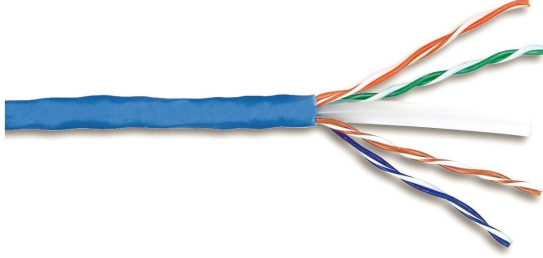


AMP CONNECT® THUNDER X1® LAN cable, U/UTP, 4P, Cat6, 23AWG, LSZH Rated , 305m,Blue

MODEL NUMBER : CCLTHX1-UULBLB



AMP CONNECT THUNDER X1® Category 6 Ethernet Cable supports the most demanding current and future high-end environments such as data centers, server farms, digital and analog voice, high resolution video and data streaming and other demanding bandwidth intensive applications that require a class E solution with Power over Ethernet (POE++) capabilities.

Features :

- Cable designed up to 400 MHz
- Fulfills all requirements of category 6 EN50288-6-1 and IEC 61156-5
- Suitable for Classe D to E according to ISO/IEC 11801. EN50173 and 10 Gigabit Ethernet according to IEEE 802.3an
- Tested and approved for Power over Ethernet applications (PoE/PoE+/4PPoE) according to IEEE 802.3af, IEEE 802.3at and IEEE 802.3bt up to 90W
- Certified by a vendor-independent and impartial test lab

Highlights

- Speed up to 2.5Gbps
- Designed support up to 400 MHz
- Exceed Category 6 specifications
- Tested for (PoE/PoE+/4PPoE)

Applications

- High-Speed Data Transmission
Voice over Internet Protocol (VoIP)
Telephony
- Video Conferencing
- IP Camera Systems
- Network Backbone Installations
- Server Farms and Data Centers

Package Includes

- 305 MTR Box

Specifications :

Ürün sınıflandırması	
Regional Availability	Asia Europe Middle East Africa
Portfolio	THUNDER X1®
Product Type	Twisted pair cable
Genel Özellikler	
ANSI/TIA Category	Cat 6
Cable Component Type	Horizontal.
Cable Type	U/UTP (unshielded)
Jacket Color	Blue..
Conductor Type	Solid
Conductors quantity	8 Conductors

Separator Type	Cross Isolator
Transmission Standards	ANSI/TIA-568.2-D CENELEC EN 50288-6-1 ISO/IEC 11801 Class E
Pairs Quantity	4 Pairs
Material Specifications	
Conductor Material	Bare copper
Insulation Material	Polyolefin..
Jacket Material	Low Smoke Zero Halogen - LSZH
Separator Material	Polyolefin
Separator 2 Material	Polyolefin.
Mechanical Specifications	
Pulling Tension, maximum	11.34 kg 25 lb
Electrical Specifications	
dc Resistance, maximum	0.1 ohm
dc Resistance Unbalance, maximum	0.01
Mutual Capacitance at Frequency	max. 1500 pF/km
Nominal Velocity of Propagation (NVP)	0.67
Operating Frequency, maximum	400 MHz
Operating Voltage, maximum	72V
Remote Powering	Fully supports the safe delivery of power over LAN cabling described by IEEE 802.3bt Type 4 - complies with the unmating under electrical load requirements prescribed by IEC 60512-99-003
Segregation Class	no
Environmental Specifications	
Operating Temperature	-20 °C to +60 °C (-4 °F to +140 °F)
Acid Gas Test Method	IEC 60754-2 VDE 0482-267-2-3 EN 60754-2
Environmental Space	Low Smoke Zero Halogen (LSZH)
Flame Test Method	IEC 60332-1-2 VDE 0482-332-1-2 EN 60332-1-1
Smoke Test Method	IEC 61034-2 VDE 0482-1034-2 EN 61034-2
Dimensions	
Diameter Over Insulated Conductor	1.03 mm 0.042 in
Diameter Over Jacket, nominal	5.9 mm 0.232 in

Jacket Thickness	0.6 mm 0.023 in
Conductor Gauge, singles	23 AWG
Packing	
Cable weight	38.097 kg/km 25.6 lb/kft
Packaging quantity	Box 305M