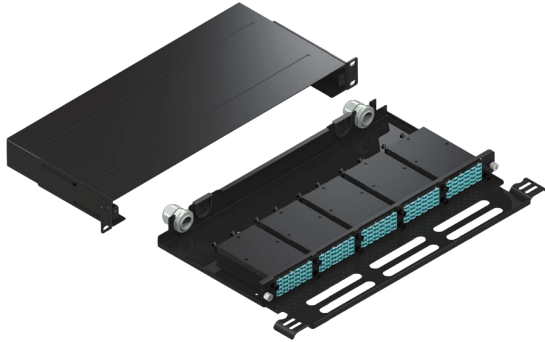


AMP CONNECT® HD5 Fiber Patch Panel 1U empty accept upto 5 adapter plate or 5 MTP Cassette

MODEL NUMBER : **FPPHD5-5P1U**



Specifications :

Product Classification	
Regional Availability	Asia Europe Middle East Africa
Portfolio	LEXF®
Product Type	Fiber patch panel
Product Series	HD5
General Specifications	
Mounting Type	Rack 19-in Rack 23-in Cabinet-mount
Color	Black
Panel Specifications	
Total Fibers Capacity	120 F
Number of Panels Cassettes Available	5
Front Interface	Unloaded
Cable entry type	External and Internal strain-relief bracket
Fiber Shelf Movement	Fixed
Material Specifications	
Housing Material	Powder-coated metal and polycarbonate tray

Mechanical Specifications	
Rack Unit Hight	1U
Environmental Specifications	
Temperature range, operation	-40 °C to 70 °C (-40 °F to 158 °F)
Regulatory Compliance/Certifications	
ROHS	Compliant.
CHINA-ROHS	Below maximum concentration value
Safety Standard	CSA 22.2 UL 1863
Temperature range, Approvals and Listings	Meets ANSI/TIA/EIA-568A and 606 Tested in accordance with Telecordia GR-63-CORE UL1863 - Communication Circuit Accessories
UK-ROHS	Compliant