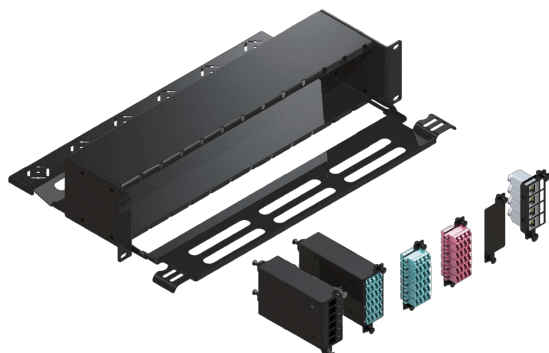


## AMP CONNECT® HD5 Fiber Patch Panel 1U empty accept upto 12 adapter plate or 12 MTP Cassette

MODEL NUMBER : **FPPHD5-12P2U**



### Specifications :

Product Classification	
Regional Availability	Asia   Europe   Middle East   Africa
Portfolio	LEXF®
Product Type	Fiber patch panel
Product Series	HD5
General Specifications	
Mounting Type	Rack 19-in   Rack 23-in   Cabinet-mount
Color	Black
Panel Specifications	
Total Fibers Capacity	288 F
Number of Panels   Cassettes Available	12..
Front Interface	Unloaded
Cable entry type	External and Internal strain-relief bracket
Fiber Shelf Movement	Fixed
Material Specifications	
Housing Material	Powder-coated metal and polycarbonate tray

Mechanical Specifications	
Rack Unit Hight	2U
Environmental Specifications	
Temperature range, operation	-40 °C to 70 °C (-40 °F to 158 °F )
Regulatory Compliance/Certifications	
ROHS	Compliant.
CHINA-ROHS	Below maximum concentration value
Safety Standard	CSA 22.2   UL 1863
Temperature range, Approvals and Listings	Meets ANSI/TIA/EIA-568A and 606   Tested in accordance with Telecordia GR-63-CORE   UL1863 - Communication Circuit Accessories
UK-ROHS	Compliant