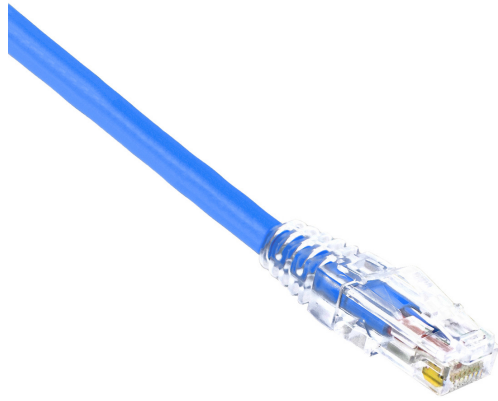


## AMP CONNECT® THUNDER X10® Copper Patch cord Max Flex, UTP, Cat6A, 26AWG, LSZH Rated, Blue, 0.5 Meter

MODEL NUMBER : **CCTHX10-ULF50BL**



### Specifications :

Product Classification	
Regional Availability	Asia   Europe   Middle East   Africa
Portfolio	THUNDER X10®
Product Type	Twisted pair patch cord
Product Series	MAX FLEX
General Specifications	
ANSI/TIA Category	Cat 6A
Cable Type	U/UTP (unshielded)
Jacket Color	Blue..
Conductor Type	Stranded
Transmission Standards	IEEE 802.3bt Type 4
Interface, Connector A	RJ45 plug.
Interface, Connector B	RJ45 plug
Pairs Quantity	4 Pairs
Wiring	T568B

Compatible Conductor Gauge, stranded	24 AWG
<b>Material Specifications</b>	
Contact Plating Material	Precious metals
Material Type	Copper alloy   Polycarbonate
<b>Mechanical Specifications</b>	
Plug Insertion Life, minimum	750 times
Plug Retention Force, minimum	133 N   29.9 lbf
<b>Environmental Specifications</b>	
Operating Temperature	-10 °C to +60 °C (+14 °F to +140 °F)
Environmental Space	Polyvinyl Chloride (PVC)
Flammability Rating	UL 94 V-2
<b>Dimensions</b>	
Diameter Over Jacket	6.02 mm
Cable Assembly Length (m)	0.5
Cable Assembly Length (ft)	1.64
Wiring Diagram	0
<b>Regulatory Compliance/Certifications</b>	
ISO 9001:2015	Designed - manufactured and/or distributed under this quality management system
<b>Packing</b>	
Packaging quantity	1PC