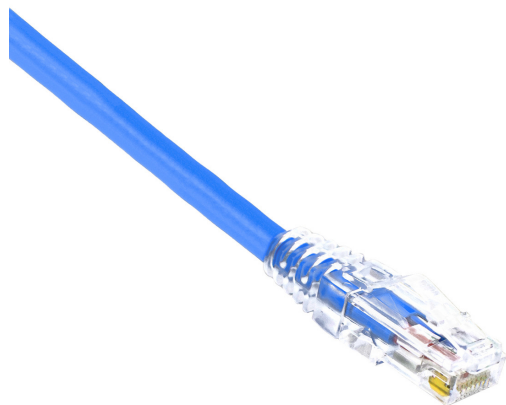


AMP CONNECT® THUNDER X1® Copper Patch cord Max Flex, UTP, Cat6, 24AWG, PVC,Blue, 15 Meter

MODEL NUMBER : CCTHX1-UPF15BL



Specifications :

Product Classification	
Regional Availability	Asia Europe Middle East Africa , Asia Europe Middle East Africa
Portfolio	THUNDER X1® , THUNDER X1®
Product Type	Twisted pair patch cord , Twisted pair patch cord
Product Series	MAX FLEX , MAX FLEX
General Specifications	
ANSI/TIA Category	Cat 6 , Cat 6
Cable Type	U/UTP (unshielded) , U/UTP (unshielded)
Jacket Color	Blue.. , Blue..
Conductor Type	Stranded , Stranded
Transmission Standards	IEEE 802.3bt Type 4 , IEEE 802.3bt Type 4
Interface, Connector A	RJ45 plug. , RJ45 plug.
Interface, Connector B	RJ45 plug , RJ45 plug
Pairs Quantity	4 Pairs , 4 Pairs

Wiring	T568B , T568B
Compatible Conductor Gauge, stranded	24 AWG , 24 AWG
Material Specifications	
Contact Plating Material	Precious metals , Precious metals
Material Type	Copper alloy Polycarbonate , Copper alloy Polycarbonate
Mechanical Specifications	
Plug Insertion Life, minimum	750 times , 750 times
Plug Retention Force, minimum	133 N 29.9 lbf , 133 N 29.9 lbf
Environmental Specifications	
Operating Temperature	-10 °C to +60 °C (+14 °F to +140 °F) , -10 °C to +60 °C (+14 °F to +140 °F)
Environmental Space	Polyvinyl Chloride (PVC) , Polyvinyl Chloride (PVC)
Flammability Rating	UL 94 V-2 , UL 94 V-2
Dimensions	
Diameter Over Jacket	6.02 mm , 6.02 mm
Cable Assembly Length (m)	15. , 15.
Cable Assembly Length (ft)	50 , 50
Regulatory Compliance/Certifications	
ISO 9001:2015	Designed - manufactured and/or distributed under this quality management system , Designed - manufactured and/or distributed under this quality management system
Packing	
Packaging quantity	1PC , 1PC