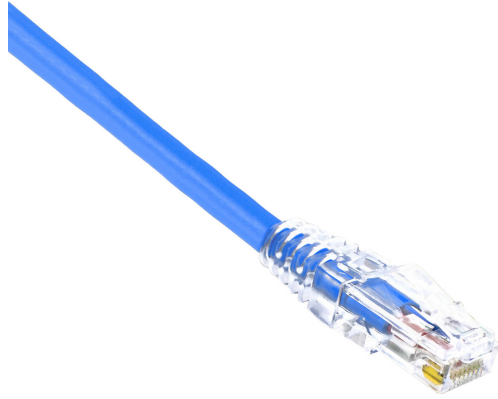


## AMP CONNECT® THUNDER X1® Copper Patch cord Max Flex, UTP, Cat6, 24AWG, PVC,Blue, 7 Meter

MODEL NUMBER : **CCTHX1-UPF07BL**



### Specifications :

Product Classification	
Regional Availability	Asia   Europe   Middle East   Africa , Asia   Europe   Middle East   Africa
Portfolio	THUNDER X1® , THUNDER X1®
Product Type	Twisted pair patch cord , Twisted pair patch cord
Product Series	MAX FLEX , MAX FLEX
General Specifications	
ANSI/TIA Category	Cat 6 , Cat 6
Cable Type	U/UTP (unshielded) , U/UTP (unshielded)
Jacket Color	Blue.. , Blue..
Conductor Type	Stranded , Stranded
Transmission Standards	IEEE 802.3bt Type 4 , IEEE 802.3bt Type 4
Interface, Connector A	RJ45 plug. , RJ45 plug.
Interface, Connector B	RJ45 plug , RJ45 plug
Pairs Quantity	4 Pairs , 4 Pairs
Wiring	T568B , T568B

Compatible Conductor Gauge, stranded	24 AWG , 24 AWG
<b>Material Specifications</b>	
Contact Plating Material	Precious metals , Precious metals
Material Type	Copper alloy   Polycarbonate , Copper alloy   Polycarbonate
<b>Mechanical Specifications</b>	
Plug Insertion Life, minimum	750 times , 750 times
Plug Retention Force, minimum	133 N   29.9 lbf , 133 N   29.9 lbf
<b>Environmental Specifications</b>	
Operating Temperature	-10 °C to +60 °C (+14 °F to +140 °F) , -10 °C to +60 °C (+14 °F to +140 °F)
Environmental Space	Polyvinyl Chloride (PVC) , Polyvinyl Chloride (PVC)
Flammability Rating	UL 94 V-2 , UL 94 V-2
<b>Dimensions</b>	
Diameter Over Jacket	6.02 mm , 6.02 mm
Cable Assembly Length (m)	7 , 7
Cable Assembly Length (ft)	23 , 23
<b>Regulatory Compliance/Certifications</b>	
ISO 9001:2015	Designed - manufactured and/or distributed under this quality management system , Designed - manufactured and/or distributed under this quality management system
<b>Packing</b>	
Packaging quantity	1PC , 1PC