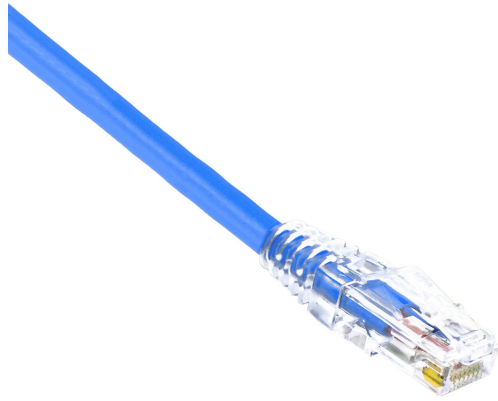


AMP CONNECT® THUNDER X1® Copper Patch cord Max EASY, UTP, Cat6, 24AWG, LSZH Rated, Blue, 5 Meter

MODEL NUMBER : **CCTHX1-ULE05BL**



Specifications :

Product Classification	
Regional Availability	Asia Europe Middle East Africa
Portfolio	THUNDER X1®
Product Type	Twisted pair patch cord
Product Series	MAX EASY
General Specifications	
ANSI/TIA Category	Cat 6
Cable Type	U/UTP (unshielded)
Jacket Color	Blue..
Conductor Type	Stranded
Transmission Standards	IEEE 802.3bt Type 4
Interface, Connector A	RJ45 plug.
Interface, Connector B	RJ45 plug
Pairs Quantity	4 Pairs
Wiring	T568B

Compatible Conductor Gauge, stranded	24 AWG
Material Specifications	
Contact Plating Material	Precious metals
Material Type	Copper alloy Polycarbonate
Mechanical Specifications	
Plug Insertion Life, minimum	750 times
Plug Retention Force, minimum	133 N 29.9 lbf
Environmental Specifications	
Operating Temperature	-10 °C to +60 °C (+14 °F to +140 °F)
Environmental Space	Polyvinyl Chloride (PVC)
Flammability Rating	UL 94 V-2
Dimensions	
Diameter Over Jacket	6.02 mm
Cable Assembly Length (m)	5.
Cable Assembly Length (ft)	16.5
Wiring Diagram	0
Regulatory Compliance/Certifications	
ISO 9001:2015	Designed - manufactured and/or distributed under this quality management system
Packing	
Packaging quantity	1PC