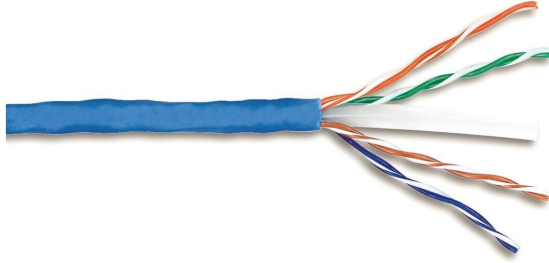


AMP CONNECT® THUNDER X10® LAN cable, U/UTP, 4P, Cat6A, 23AWG, LSZH Rated , 500m,Blue

MODEL NUMBER : **CCLTHX10-UULBLR**



Specifications :

Product Classification	
Regional Availability	Asia Europe Middle East Africa
Portfolio	THUNDER X10®
Product Type	Twisted pair cable
General Specifications	
ANSI/TIA Category	Cat 6A
Cable Component Type	Horizontal.
Cable Type	U/UTP (unshielded)
Jacket Color	Blue..
Conductor Type	Solid
Conductors quantity	8 Conductors
Separator Type	Cross Isolator
Transmission Standards	ANSI/TIA-568.2-D ISO/IEC 11801 Class EA
Pairs Quantity	4 Pairs
Material Specifications	
Conductor Material	Bare copper
Insulation Material	Polyolefin..
Jacket Material	Low Smoke Zero Halogen - LSZH

Separator Material	Polyolefin
Separator 2 Material	Polyolefin.
Mechanical Specifications	
Pulling Tension, maximum	11.34 kg 25 lb
Electrical Specifications	
dc Resistance, maximum	max.85 Ω/km
dc Resistance Unbalance, maximum	0.01
Mutual Capacitance at Frequency	max. 1500 pF/km
Nominal Velocity of Propagation (NVP)	0.78
Operating Frequency, maximum	600 MHz
Operating Voltage, maximum	72V
Remote Powering	Fully supports the safe delivery of power over LAN cabling described by IEEE 802.3bt Type 4 - complies with the unmating under electrical load requirements prescribed by IEC 60512-99-003
Segregation Class	no
Environmental Specifications	
Operating Temperature	-20 °C to +60 °C (-4 °F to +140 °F)
Acid Gas Test Method	IEC 60754-2 VDE 0482-267-2-3 EN 60754-2
Environmental Space	Low Smoke Zero Halogen (LSZH)
Flame Test Method	IEC 60332-1-2 VDE 0482-332-1-2 EN 60332-1-1
Smoke Test Method	IEC 61034-2 VDE 0482-1034-2 EN 61034-2
Dimensions	
Diameter Over Insulated Conductor	0.87 mm 0.034 in
Diameter Over Jacket, nominal	6.5 mm 0.255 in
Jacket Thickness	0.9 mm 0.035 in
Conductor Gauge, singles	23 AWG
Packing	
Cable weight	38.097 kg/km 25.6 lb/kft
Packaging quantity	Reel 500M

